

FOR IMMEDIATE RELEASE: December 9, 2024

CONTACTS:

Nydia Gutiérrez, ngutierrez@earthjustice.org, (202) 302-7531

ElectrifyNY Coalition Launches Mega-Warehouse Watchlist

The watchlist details the top 5 NY State Senate and Assembly districts with the highest population residing in mega-warehouse traffic areas;

Tailpipe emissions from e-commerce mega-warehouse traffic pump the air with toxic pollution causing high asthma, cardio, and pulmonary disease rates in Black, Latino/Hispanic, and low-income neighborhoods

New York, NY – Today, a coalition of environmental justice and clean air policy organizations, ElectrifyNY, launched the “[Mega-Warehouse Watchlist](#)”, an analysis of the percentage of residents in New York Senate and Assembly districts living within a half mile of mega-warehouses, like Amazon, UPS, and FedEx. With tailpipe emissions due to high truck traffic causing health harms like childhood asthma, cardio, and pulmonary disease, the coalition urges lawmakers to pass laws like the Clean Deliveries Act for community protection and greenhouse gas emission reductions.

The watchlist dives into four regions covering New York including New York City, Long Island, western New York, and the Hudson Valley finding highest percentage of the population living within 1/2 mile of mega-warehouses (facilities ≥ 50,000 ft.) per legislative district. Due to the unregulated clustering of mega-warehouses, the watchlist identifies New York City and the Hudson Valley as having the highest populations living a half mile from the mega-warehouses.

Additionally, 1 in 4 New Yorkers live within a half-mile of an e-commerce mega-warehouse, mainly Black, Latino/Hispanic, and low-income communities. With these football field-size warehouses being built with little regulation, toxic air emissions encase neighborhoods already suffering from poor air quality, especially along high truck traffic areas.

During this year’s NY legislative session, the NY Senate voted to pass the Clean Deliveries Act ([S2127C/A1718C](#)), a common sense environmental justice bill introduced by NY Senate Deputy Leader Michael Gianaris (NY-District 12) and Assemblymember Marcela Mitaynes (NY-District 51). The bill would direct the state to review emissions related to large warehouses and require warehouse operators to choose from an array of actions to minimize pollution. The legislation would also commission a study of the feasibility, benefits, and costs of implementing low- and zero-emissions areas for air pollution and congestion hotspots.

"We have fought hard to improve our air quality by enacting the nation-leading CLCPA, fighting fossil fuel power plants, and pushing for more electrification, but we cannot allow those to be stymied by the proliferation of e-commerce warehouses. We need action now, and that's why I'm fighting to pass the Clean Deliveries Act to ensure we live up to our environmental commitments," said **Senate Deputy Leader Michael Gianaris**.



ELECTRIFYNY

“Major companies like Amazon and FedEx are sacrificing the health of New Yorkers in the name of bigger profits,” **said Assemblymember Marcela Mitaynes**. “The lack of oversight on last-mile warehouse operations has left our marginalized communities more vulnerable to toxic air emissions and its devastating consequences. I introduced The Clean Deliveries Act (CDA) to hold these companies accountable and give them actionable steps to align with New York State’s CLCPA mandates. Our communities’ health is not for sale, and if they are going to operate in our communities, they must do so with transparency.

“E-commerce giants may profit from the boom in deliveries, but our communities pay the price in pollution from mega-warehouses and endless delivery trucks,” said **State Senator Andrew Gounardes**. “This important new analysis makes clear that working class communities have been bearing the brunt of toxic pollution that causes asthma and pulmonary disease. It’s time for us to act. That’s why I’m proud to support the Clean Deliveries Act to require warehouse operators to clean up their act.”

“I co-sponsored the Clean Deliveries Act because we cannot go backwards when it comes to working to remove fossil fuel pollutants from the air we breathe. The enormous warehouses now being constructed, many of which are in underserved, low-income neighborhoods, generate more truck and vehicular traffic—and produce more air pollution—to undermine any attempts at environmental justice being sought. Passing this legislation means standing up for the health of our neighbors and the future of our planet,” **said Senator Pete Harckham**.

“The Clean Deliveries Act is a step forward in addressing the disproportionate health and environmental challenges facing our brothers and sisters in New York neighborhoods. 59% of District 137 live within a half mile of a ‘Mega Warehouse’ and corporate convenience should not come at the expense of our neighborhood’s health. The Clean Deliveries Act ensures accountability and the well-being of those affected by warehouse pollution,” **said Assemblymember Demond Meeks**.

“A whopping 94% of my constituents live within a half a mile of a mega-warehouse,” **said Assemblymember Jo Anne Simon**. “We are putting our communities at risk by bringing constant truck traffic into our neighborhoods, increasing air pollution, and exacerbating health issues like asthma. As ElectrifyNY’s analysis makes clear, we must pass the Clean Deliveries Act to protect the public’s health and create more sustainable spaces for all.”

“The explosion of mega-warehouses across New York has brought a devastating surge of truck traffic to our neighborhoods, making our streets more dangerous and our air more toxic,” **said Assemblymember Emily Gallagher**. “In North Brooklyn, we see firsthand how these facilities concentrate pollution in communities already struggling with poor air quality and unsafe streets. The Clean Deliveries Act will help us protect our neighbors and ensure that the growth of e-commerce doesn’t come at the expense of our health, our pedestrians’ safety, or our climate goals.”

“Our Mega-Warehouse Watchlist reveals the true scale of this crisis - from Buffalo to Long Island and everywhere in between, New Yorkers are facing a surge of warehouse development that threatens public health in communities already overburdened by pollution,” **said Jaqi**

Cohen, Director of Climate and Equity Policy at Tri-State Transportation Campaign. "The Clean Deliveries Act will give New York the tools to protect residents across the state by requiring warehouse operators to clean up their operations and transition to zero-emission technologies. New York cannot meet its climate goals without addressing the growing impact of mega-warehouses on our communities."

"Toxic diesel truck pollution is choking our communities, disproportionately impacting those living near mega-warehouses and distribution hubs. These facilities contribute to a staggering level of harmful emissions, and the companies behind them must be held to a new standard that will grow clean zero-emission jobs and improve our air quality. Clean air is a basic right, not a privilege, and we need bold action to ensure that warehouses take responsibility for their environmental footprint. The Clean Deliveries Act is the first of its kind and will provide clean zero-emissions solutions to implement sustainable logistics practices. This is an urgent necessity to protect public health and combat the climate crisis." **Jessica Enzmann, Senior Campaign Organizer at Sierra Club.**

"The Clean Deliveries Act enables a much-needed transition to green-powered warehouse operations. This legislation will move the needle forward to ensure that New York State meets its climate goals," **said Suhali Méndez, Policy, and Legislative Coordinator at New York Lawyers for the Public Interest,** "and it will be imperative to address the historical harms from these warehouses to disadvantaged communities that are overly saturated with harmful emissions. The launch of this watchlist uncovers the impacts of the harm on public health in these communities and will hold warehouses statewide accountable."

"The rapid growth of e-commerce in recent decades has allowed for an unregulated proliferation of e-commerce mega warehouses. This has translated to a surge in the volume and frequency of diesel-burning trucks across the state to meet delivery demands," **said Kevin Garcia, Senior Transportation Planner with the New York City Environmental Justice Alliance.** "These facilities can be sited without any environmental or public review and many are concentrated near disadvantaged communities. The Mega Warehouse Watchlist delivers a clear message that we need the Clean Deliveries Act passed to protect our communities and create healthy neighborhoods."

"The rapid rise of e-commerce has come at a devastating cost to New Yorkers' health and the climate, as mega-warehouses, often clustered in overburdened communities, drive endless diesel truck traffic, worsening air quality and fueling alarming rates of asthma and heart disease. The Clean Deliveries Act is a critical step toward accountability, healthier neighborhoods, and a zero-emissions future. By prioritizing solutions like clean energy vehicles and infrastructure, we can protect public health, advance climate justice, and ensure a livable future for all New Yorkers." – **New Yorkers for Clean Power**

"The watchlist shows that every day, mega-warehouses owned by some of the wealthiest corporations in the world are sending thousands of polluting diesel trucks through communities



across New York – and some areas are bearing the worst impacts. We need to take legislative and regulatory action to protect our communities and our air quality,” said **Alok Disa, Senior Policy and Research Analyst**. “The Clean Deliveries Act sets achievable timelines and addresses necessary steps for the zero-emissions delivery transition.”

Background

E-commerce mega-warehouses generate significant emissions from the large number of delivery trucks that come in and out of each facility, a problem that has only been exacerbated by the pandemic and the increase in online purchasing from e-commerce sites. According to [EDF's “Warehouse Boom” report](#), 1 in 4 New Yorkers (4.9 million residents) now live within half a mile of a leased warehouse 50,000 square feet or larger. Unlike traditional warehouses, these [e-commerce warehouses](#) are larger, with some larger than 15 football fields combined. These mega warehouses operate 24/7 and produce greenhouse gas emissions equal in scale to those from power plants and factories. These trucks pollute particulate matter, nitrogen oxides, and volatile organic compounds, [worsening local air quality](#), and increasing the risk of [asthma](#), heart attacks, and [premature deaths](#) in the surrounding neighborhood.

The Clean Deliveries Act establishes an indirect source review (ISR) program for certain warehouse operations and requires the New York State Department of Environmental Conservation (DEC) to conduct a study regarding zero emissions zones.

Key provisions of the bill include:

- A review of emissions from all e-commerce warehouses exceeding 50,000 sq. ft.
- An air emissions reduction and mitigation plan requiring warehouse operators to minimize pollution by implementing one or more of the following:
 - Acquiring zero-emission vehicles & charging infrastructure
 - Installing solar panels and/or batteries on-site
 - Considering alternative transportation modes for incoming or outgoing trips where appropriate
 - Paying additional fees
- Enhanced protections for warehouses operating in disadvantaged communities or that impact schools and similar facilities
- A permit requirement for new warehouse developments or those proposing significant modifications
- Ongoing reporting requirements related to truck traffic and emissions mitigation measures
- A zero-emission zones study on the feasibility, benefits, and costs of implementing low and zero emissions designated areas for air pollution and congestion hotspots within New York State

New York State has been a clean energy leader, passing the landmark [Climate Leadership and Community Protection Act](#) (CLCPA) in 2019, adopting the Advanced Clean Trucks (ACT) Rule in 2021, and enacting the Advance Clean Cars II (ACCII) Rule in 2022 to reduce emissions economy-wide and advance a just transition towards a zero-emission transportation sector.



Passing the Clean Deliveries Act is a critical next step towards achieving New York State's climate mandates, and ensuring that New Yorkers that are burdened with emissions from fossil fuels are prioritized for zero-emission investments.

Learn more here: <https://electrifyny.org/mega-warehouse-watchlist/>

ElectrifyNY is a statewide coalition of advocates for environmental justice, public transportation, social justice, and good jobs fighting for a clean, equitable electric transportation future for New York. Our work aims to improve the environment and public health outcomes for the communities most affected by the negative impacts of the transportation sector's dependency on fossil fuels.



NEW YORK CITY MEGA-WAREHOUSE WATCHLIST

↓ These are the **5** districts in the region with the highest percentage of the population living within 1/2 mile of mega-warehouses (facilities \geq 50,000 ft.) region-wide.

LEGISLATIVE DISTRICT & REPRESENTATIVE	PERCENT OF POPULATION LIVING WITHIN 1/2 MILE OF A MEGA- WAREHOUSE
1. ASSEMBLY DISTRICT 50 REP. EMILY GALLAGHER Brooklyn: Greenpoint & Williamsburg	98% live within 1/2 mile of a mega-warehouse
2. ASSEMBLY DISTRICT 52 REP. JO ANNE SIMON Brooklyn: Downtown BK & Carroll Gardens	94% live within 1/2 mile of a mega-warehouse
3. ASSEMBLY DISTRICT 37 REP. CLAIRE VALDEZ Queens: Long Island City & Ridgewood	93% live within 1/2 mile of a mega-warehouse
4. ASSEMBLY DISTRICT 53 REP. MARITZA DAVILA Brooklyn: East Williamsburg & Bushwick	93% live within 1/2 mile of a mega-warehouse
5. ASSEMBLY DISTRICT 57 REP. PHARA SOUFFRANT Brooklyn: Fort Greene & Clinton Hill	91% live within 1/2 mile of a mega-warehouse



Mega-warehouses attract hundreds to thousands of diesel truck trips per day - exposing communities to elevated risk of **asthma**, **bronchitis**, & **heart disease**.



LONG ISLAND MEGA-WAREHOUSE WATCHLIST

↓ These are the **5** districts with the highest percentage of the population living within 1/2 mile of mega-warehouses (facilities \geq 50,000 ft.) region-wide.

LEGISLATIVE DISTRICT & REPRESENTATIVE	PERCENT OF POPULATION LIVING WITHIN 1/2 MILE OF A MEGA-WAREHOUSE
1. ASSEMBLY DISTRICT 19 REP. EDWARD P. RA Garden City, Mineola, New Hyde Park	43% live within 1/2 mile of a mega-warehouse
2. ASSEMBLY DISTRICT 13 REP. CHARLES D. LAVINE Glen Cove, Westbury, Bayville, Sea Cliff	43% live within 1/2 mile of a mega-warehouse
3. ASSEMBLY DISTRICT 11 REP. KWANI O'PHARROW Lindenhurst, Amityville, North Lindenhurst	41% live within 1/2 mile of a mega-warehouse
4. SENATE DISTRICT 4 REP. MONICA MARTINEZ Deer Park, North Bay Shore, West Babylon	40% live within 1/2 mile of a mega-warehouse
5. ASSEMBLY DISTRICT 6 REP. PHIL RAMOS Bay Shore, Baywood, Central Islip, Islandia, Brentwood	39% live within 1/2 mile of a mega-warehouse



Mega-warehouses attract hundreds to thousands of diesel truck trips per day - exposing communities to elevated risk of **asthma**, **bronchitis**, & **heart disease**.



WESTERN NEW YORK MEGA-WAREHOUSE WATCHLIST

↓ These are the **5** districts with the highest percentage of the population living within 1/2 mile of mega-warehouses (facilities \geq 50,000 ft.) region-wide.

LEGISLATIVE DISTRICT & REPRESENTATIVE	PERCENT OF POPULATION LIVING WITHIN 1/2 MILE OF A MEGA-WAREHOUSE
1. ASSEMBLY DISTRICT 137 REP. DEMOND MEEKS Rochester: Gates, 19th Ward, United Neighbors Together	59% live within 1/2 mile of a mega-warehouse
2. ASSEMBLY DISTRICT 141 REP. CRYSTAL PEOPLES-STOKES Buffalo: Willert Park, Fruit Belt, MLK Park, Broadway-Fillmore	52% live within 1/2 mile of a mega-warehouse
3. SENATE DISTRICT 63 REP. APRIL MCCANTS-BASKIN Buffalo: Lackawanna, Larkinville, Cheektowaga	47% live within 1/2 mile of a mega-warehouse
4. ASSEMBLY DISTRICT 143 REP. PATRICK CHLUDZINSKI Buffalo: Cleveland Hill, Depew, Bowmansville, Lancaster	43% live within 1/2 mile of a mega-warehouse
5. ASSEMBLY DISTRICT 119 REP. MARIANNE BUTTENSCHON Marcy, Rome, Deerfield, Air City, Coonrod	35% live within 1/2 mile of a mega-warehouse



Mega-warehouses attract hundreds to thousands of diesel truck trips per day - exposing communities to elevated risk of **asthma**, **bronchitis**, & **heart disease**.



HUDSON VALLEY MEGA-WAREHOUSE WATCHLIST

↓ These are the **5** districts with the highest percentage of the population living within 1/2 mile of mega-warehouses (facilities \geq 50,000 ft.) region-wide.

LEGISLATIVE DISTRICT & REPRESENTATIVE	PERCENT OF POPULATION LIVING WITHIN 1/2 MILE OF A MEGA- WAREHOUSE
1. SENATE DISTRICT 36 REP. JAMAAL T. BAILEY North Bronx, Mount Vernon, Wakefield	76% live within 1/2 mile of a mega-warehouse
2. ASSEMBLY DISTRICT 89 REP. J. GARY PRETLOW Mount Vernon, Yonkers	67% live within 1/2 mile of a mega-warehouse
3. SENATE DISTRICT 34 REP. NATHALIA FERNANDEZ Bronx: Parkchester, Pelham Bay, Castle Hill	44% live within 1/2 mile of a mega-warehouse
4. ASSEMBLY DISTRICT 90 NADER J. SAYEGH Yonkers: Lincoln Park, Bryn Mawr Park, Centuck	41% live within 1/2 mile of a mega-warehouse
5. SENATE DISTRICT 35 REP. ANDREA STEWART-COUSINS Yonkers: Park Hill, Whitney Young, Lincoln Park	35% live within 1/2 mile of a mega-warehouse

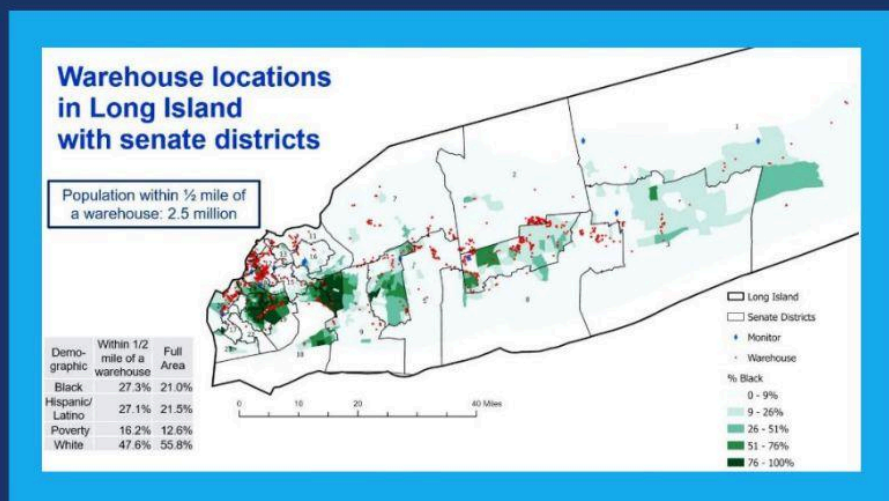


Mega-warehouses attract hundreds to thousands of diesel truck trips per day - exposing communities to elevated risk of **asthma**, **bronchitis**, & **heart disease**.



LONG ISLAND

- **2.7 million** people live within half a mile of a warehouse. This exposes them to hundreds to thousands of diesel truck trips per day.
- Black residents are **53%** more likely to live within half a mile of a warehouse than would be expected based on the region's demographics.
- Hispanic/Latino residents are **45%** more likely to live within half a mile of a warehouse.
- Low-income residents are **22%** more likely to live within half a mile of a warehouse.





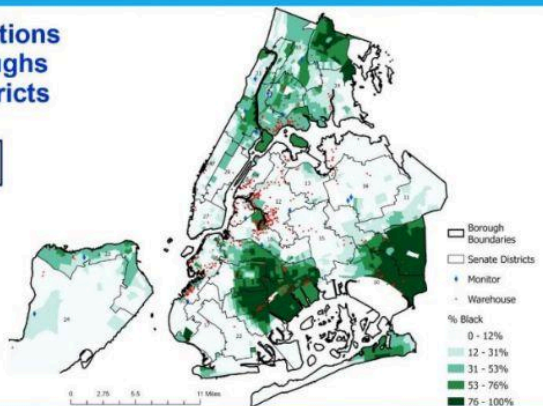
NEW YORK CITY

- **3 million** people live within half a mile of a warehouse. This exposes them to hundreds to thousands of diesel truck trips per day.
- Black residents are **14%** more likely to live within half a mile of a warehouse than would be expected based on the region's demographics.
- Hispanic/Latino residents are **10%** more likely to live within half a mile of a warehouse.
- Low-income residents are **16%** more likely to live within half a mile of a warehouse.

Warehouse locations in the five boroughs with senate districts

Population within 1/2 mile of a warehouse: 3 million

Demographic	Within 1/2 mile of a warehouse	Full Area
Black	30.6%	26.2%
Hispanic / Latino	32.7%	28.9%
Poverty	20.7%	17.5%
White	40.3%	45.3%





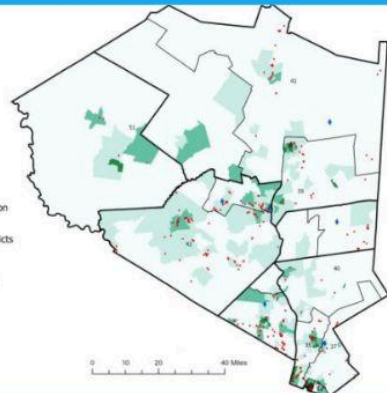
THE HUDSON VALLEY

- **468K** people live within half a mile of a warehouse. This exposes them to hundreds to thousands of diesel truck trips per day.
- Black residents are **90%** more likely to live within half a mile of a warehouse than would be expected based on the region's demographics.
- Hispanic/Latino residents are **64%** more likely to live within half a mile of a warehouse.
- Low-income residents are **51%** more likely to live within half a mile of a warehouse.

Warehouse locations in the Hudson Valley with senate districts

Population within 1/2 mile of a warehouse: 457,000

Demo-graphic	Within 1/2 mile of a warehouse	Full Area
Black	28.1%	14.0%
Hispanic/Latino	32.4%	19.5%
Poverty	15.7%	10.2%
White	52.5%	74.0%





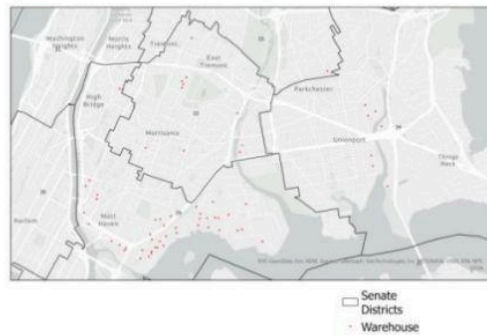
THE SOUTH BRONX

- **389,000** people live within half a mile of a warehouse. This exposes them to hundreds to thousands of diesel truck trips per day.
- The asthma-related emergency department visit rates in some South Bronx neighborhoods among children ages five to 17 are **3X** higher than rates across the five boroughs.
- Pollution from diesel trucks also contributes to **bronchitis** and **heart disease**.

Warehouse locations in the South Bronx with senate districts

Population within 1/2 mile of a warehouse: 233,000

Demo-graphic	Within 1/2 mile of a warehouse	Full Area
Black	38.6%	39.1%
Hispanic / Latino	63.0%	63.9%
Poverty	34.1%	34.0%
White	18.2%	18.3%





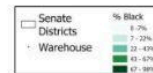
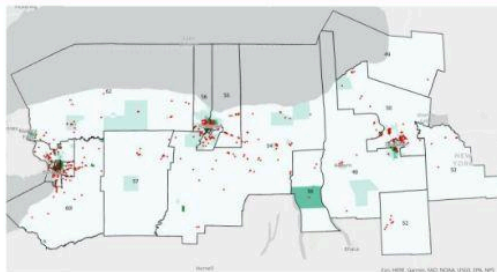
WESTERN & CENTRAL NY

- **680,000** people live within half a mile of a warehouse. This exposes them to hundreds to thousands of diesel truck trips per day.
- Black residents are **142%** more likely to live within half a mile of a warehouse than would be expected based on the region's demographics.
- Hispanic/Latino residents are **97%** more likely to live within half a mile of a warehouse.
- Low-income residents are **78%** more likely to live within half a mile of a warehouse.

Warehouse locations in Western and Central NY with senate districts

Population within 1/2 mile of a warehouse: 327,000

Demo-graphic	Within 1/2 mile of a warehouse	Full Area
Black	25.8%	11.5%
Hispanic/Latino	11.5%	5.4%
Poverty	24.3%	13.2%
White	68.3%	85.0%



PASS THE CLEAN DELIVERIES ACT TODAY!



THE CLEAN DELIVERIES ACT CLEANS UP AIR POLLUTION BY...

- Requiring mega-warehouse facilities to **track their pollution**.
- Promoting the adoption of **zero-emissions vehicles and infrastructure**.
- Ensuring new warehouses are built with **cleaner technologies**.